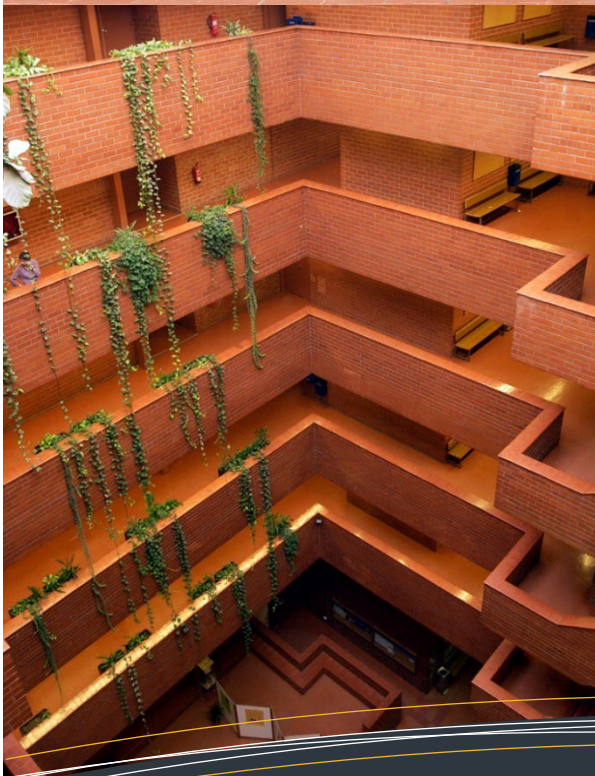


# FACULTAT DE BIOLOGIA



# FACULTAT DE BIOLOGIA



# INTERNATIONAL STUDENTS GUIDE

**2024-25**  
**FACULTY OF BIOLOGY**  
**Universitat de Barcelona**

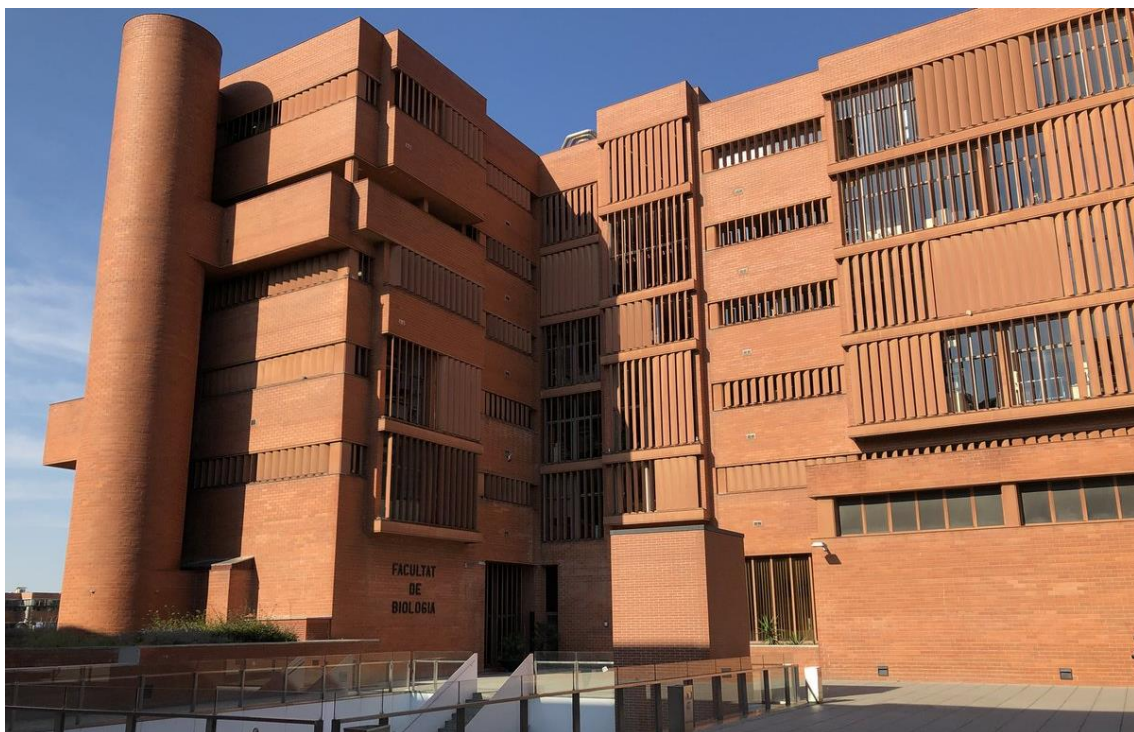


## UB and the Faculty of Biology

According to the rankings, the University of Barcelona is one of the most reputed European universities and actually located in one of the best cities to study. It is the first ranked university in Spain and the 160th among all the universities in the World in the QS World University Ranking 2017. **In Biological Sciences, the Faculty is ranked in the world's best 101-150.** Its own history closely tied to the history of Barcelona and of Catalonia, our university combines the values of tradition with its position as an institution dedicated to innovation and teaching excellence: a university that is as outward-looking and cosmopolitan as the city from which it takes its name.

The UB campuses are spread out across the entire inner-city area, thus fostering a series of close ties between the institution of our University and the city around us. These ties contribute to the human and cultural environment present in certain parts of Barcelona and enables members of the university community to enjoy both the city's services and those of the UB.

The **Faculty of Biology** was established in 1974, making it a pioneering institution in Spain. It first appeared as a result of increasing knowledge in the field of life sciences at a time of relentless diversification. It is located on the Pedralbes Campus (Av. Diagonal, 643) opposite the Palau Reial, and as such is well connected with the various public transport systems in the metropolitan area.



## Courses

Incoming students at the faculty of biology have the possibility of taking either **Bachelor, Master or Lab training courses**. We recommend a minimum course load of 15 ECTS for one semester or 30 ECTS for the whole year. Here it follows information about the different possibilities you have.

The [Faculty of Biology](#) offers the following **Bachelor degrees**:

[EHEA bachelor's degree in Biology](#)

[EHEA bachelor's degree in Environmental Sciences](#)

[EHEA bachelor's degree in Biotechnology](#)

[EHEA bachelor's degree in Biomedical Sciences](#)

[EHEA bachelor's degree in Biochemistry](#)

[EHEA bachelor's degree in Bioinformatics](#)



& the following **Master and Postgraduate Programmes**:

[Advanced Immunology](#)

[Advanced Microbiology](#)

[Aquaculture](#)

[Biodiversity](#)

[Bioinformatics and Biostatistics](#)

[Bioinformatics for health sciences](#)

[Biological Anthropology](#)

[Ecology, Environmental Management and Restoration](#)

[Environmental Agrobiology](#)

[Erasmus Mundus in Leading International Vaccinology Education \(LIVE\)](#)

[Erasmus Mundus Master in Science in Health Management in Aquaculture](#)

[Genetics and Genomics](#)

[Integrative physiology](#)

[Neurosciences](#)

[Oceanography and Marine Environmental Management](#)

[Plant Biology, Genomics and Biotechnology](#)

## Bachelor courses

At the Faculty of Biology of the University of Barcelona, we have five Bachelor degrees: **Biology, Environmental Sciences, Biochemistry, Biotechnology and Biomedicine**. As an exchange student, you are able to take courses from any of the five Bachelor programs, combining them as you wish.

Visit the [Faculty website](#) for more information

You can take any subject in Catalan/Spanish. But if you don't speak any of them, we also have a few **courses in English** which are:

SUBJECT	DEGREE	COURSE	SEMESTER
<a href="#">Cancer Biology</a>	Biomedical Sciences	3rd year	Autumn
<a href="#">Immunology</a>	Biomedical Sciences	3rd year	Spring
<a href="#">Developmental Biology</a>	Biomedical Sciences	3rd year	Spring
<a href="#">Neurogenetics of Behavior</a>	Biomedical Sciences	4th year	Spring
<a href="#">Research project Development</a>	Biomedical Sciences	4th year	Spring
<a href="#">Genetic diseases</a>	Biomedical Sciences	4th year	Spring
<a href="#">Cell Biology</a>	Biochemistry	2nd year	Autumn
<a href="#">Laboratory III</a>	Biochemistry	3rd year	Autumn
<a href="#">Design and Evaluation of Bioactive Molecules</a>	Biochemistry	4th year	Spring
<a href="#">Immunology</a>	Biochemistry	3rd year	Spring
<a href="#">Bioethics</a>	Biochemistry	4th year	Autumn
<a href="#">Applied Immunology</a>	Biochemistry	4th year	Spring
<a href="#">Genetic Engineering</a>	Biotechnology	3rd year	Autumn
<a href="#">Trangenesis and Animal Breeding</a>	Biotechnology	3rd year	Autumn
<a href="#">Immunology</a>	Biotechnology	3rd year	Autumn
<a href="#">Virology</a>	Biology	4th year	Autumn

## Links to the different BA and MA courses (academic year 23-24):

Bachelor programmes

Biology: <http://www.ub.edu/grad/infes/fitxaInfe.jsp?n0=L&n1=0&n2=1&tipus=& curs=2023&ens=TG1031>

Biochemistry: <http://www.ub.edu/grad/infes/fitxaInfe.jsp?n0=L&n1=0&n2=1&tipus=& curs=2023&ens=TG1034>

Biotechnology: <http://www.ub.edu/grad/infes/fitxaInfe.jsp?n0=L&n1=0&n2=1&tipus=& curs=2023&ens=TG1033>

Ciències

ambientals: <http://www.ub.edu/grad/infes/fitxaInfe.jsp?n0=L&n1=0&n2=1&tipus=& curs=2023&ens=TG1032>

Ciències

biomèdiques: <http://www.ub.edu/grad/infes/fitxaInfe.jsp?n0=L&n1=0&n2=1&tipus=& curs=2023&ens=TG1090>

Master programmes

Agrobiologia

Ambiental: <http://www.ub.edu/grad/infes/fitxaInfe.jsp?n0=I&n1=0&n2=1&tipus=& curs=2023&ens=M2204>

Antropologia

Biològica: <http://www.ub.edu/grad/infes/fitxaInfe.jsp?n0=I&n1=0&n2=1&tipus=& curs=2023&ens=M0G09>

Aqüicultura <http://www.ub.edu/grad/infes/fitxaInfe.jsp?n0=I&n1=0&n2=1&tipus=& curs=2023&ens=M0604>

Biodiversitat <http://www.ub.edu/grad/infes/fitxaInfe.jsp?n0=I&n1=0&n2=1&tipus=& curs=2023&ens=M0G08>

Ecologia, Gestió i Restauració del Medi

Natural <http://www.ub.edu/grad/infes/fitxaInfe.jsp?n0=I&n1=0&n2=1&tipus=&curs=2023&ens=M2203>

Fisiologia

integrativa <http://www.ub.edu/grad/infes/fitxaInfe.jsp?n0=I&n1=0&n2=1&tipus=& curs=2023&ens=M2206>

Genètica i

Genòmica <http://www.ub.edu/grad/infes/fitxaInfe.jsp?n0=I&n1=0&n2=1&tipus=&curs=2023&ens=M0Q04>

Immunologia

avançada: <http://www.ub.edu/grad/infes/fitxaInfe.jsp?n0=I&n1=0&n2=1&tipus=& curs=2023&ens=M0107>

Microbiologia

Avançada: <http://www.ub.edu/grad/infes/fitxaInfe.jsp?n0=I&n1=0&n2=1&tipus=&curs=2023&ens=M0Q05>

Neurociències: <http://www.ub.edu/grad/infes/fitxaInfe.jsp?n0=I&n1=0&n2=1&tipus=& curs=2023&ens=M0108>

Oceanografia i Gestió del Medi

Marí: <https://web.ub.edu/ca/web/estudis/w/masteruniversitari-M0605?subjects>

## Master courses

As an exchange student, you are also able to take **Master courses**. Nevertheless, you have to take into account that Bachelor courses in our faculty are four years long in contrast with most Bachelors in Europe of three years, so a master course would correspond to the fifth year of studies. This makes sometimes difficult that an incoming Bachelor student in his/her 2nd/3rd year of studies has an academic background long enough to follow master courses correctly. In addition to that, master courses have limited places available and students taking the complete master program have priority in front of exchange students.

This situation makes necessary that master coordination give their acceptance to Exchange Students applying for the courses based on student academic background and places available.

In our Faculty, we have eleven master programs. You can check their programs [here](#).

Master programs have a wider offer of courses taught in English and we have one master fully done in English: [Msc in Genetics and Genomics](#). There are other masters offering courses in English such as Master in Biomedicine, Molecular Biotechnology (Faculty of Pharmacy), and Immunology.





Master Programmes offered in English				
MASTER	SUBJECT	SEMESTER		
<a href="#">Master in Genetics and Genomics</a>	<a href="#">fully in English.</a> Incoming students are only allowed to take the following courses and attendance to the courses is mandatory  <a href="#">Advanced Genetic Analysis and Functional Genomics</a>  <a href="#">Human Genome</a>  <a href="#">Developmental Genetics and Genomics</a>  <a href="#">Evolution and Development</a>  <a href="#">Regeneration and Stem Cells</a>  <a href="#">Advanced Bioinformatics</a>  <a href="#">Tissue Differentiation in Fetal and Neonatal Development</a>  <a href="#">Comparative Genomics</a>  <a href="#">From Organogenesis to Aging</a>	Autumn		
	<a href="#">Master in Advanced Immunology</a>		<a href="#">Anatomy of the Immune System</a>	Autumn
			<a href="#">Immunogenetics</a>	Autumn
			<a href="#">Immunopathology</a>	Autumn
			<a href="#">Regulation of the Immune Response</a>	Autumn
			<a href="#">Signal Activation and Transduction</a>	Autumn
			<a href="#">Autoimmunity</a>	Autumn
			<a href="#">Immunodeficiencies and AIDS</a>	Autumn
	<a href="#">Master in Neurosciences</a>		<a href="#">Basis of cognitive neuroscience</a> (to be confirmed for 24-25)	Autumn
			<a href="#">Computational Neuroscience</a> (to be confirmed)	Autumn
	<a href="#">Neurotoxicology</a> (to be confirmed)	Autumn		
	<a href="#">Molecular biology of ion channels, receptors and transporters</a> (to be confirmed)	Autumn		
	<a href="#">Neurobiology of pain</a> (to be confirmed)	Autumn		
	<a href="#">Neurobiology of sensory systems</a> (to be confirmed)	Autumn		
	<a href="#">Neurotransmission</a> (to be confirmed)	Autumn		

<a href="#"><u>Master in Molecular Biotechnology</u></a> (Faculty of Pharmacy and Food Sciences)	<a href="#"><u>Animal Biotechnology</u></a>	Autumn
	<a href="#"><u>Biotechnological Applications</u></a>	Autumn
	<a href="#"><u>Ethical, Legal and Management Issues in Research and Development and Entrepreneurship in Biotechnology</u></a>	Spring
	<a href="#"><u>Gene, Cell and Tissue Therapy</u></a>	Spring
	<a href="#"><u>Genomics, Proteomics and Bioinformatics</u></a>	Autumn
	<a href="#"><u>Molecular and Genetic Principles of Biotechnology</u></a>	Autumn
	<a href="#"><u>Molecular Diagnosis</u></a>	Spring
	<a href="#"><u>Structure and Analysis of Macromolecules</u></a>	Spring
<a href="#"><u>Biomedicine</u></a> (Faculty of Medicine and Health Sciences)	<a href="#"><u>Advances in Molecular Mechanisms of Cancer Progression and Dissemination</u></a>	Autumn
	<a href="#"><u>Advances in Molecular Mechanisms of Cell Transformation</u></a>	Autumn
	<a href="#"><u>Ageing and Senescence</u></a>	Autumn
	<a href="#"><u>Epigenetics: Mechanisms and Applications in Biomedicine</u></a>	Autumn
	<a href="#"><u>Experimental Models in Biomedicine</u></a>	Autumn
	<a href="#"><u>Fluorescence Microscopy Techniques</u></a>	Autumn
	<a href="#"><u>From the Laboratory to the Patient: Transferring Advances in Biomedical Research to Clinical Practice</u></a>	Autumn
	<a href="#"><u>High-Content Screening: Image and Data Analysis of Cellular Populations</u></a>	Autumn
	<a href="#"><u>Research and Development and Innovation Management</u></a>	Autumn
	<a href="#"><u>Scientific Communication</u></a>	Autumn
	<a href="#"><u>Stem Cells and Regenerative Medicine</u></a>	Autumn
	<a href="#"><u>Translational Research and Therapy in Cancer</u></a>	Autumn
	<a href="#"><u>Writing Research Projects</u></a>	Spring
	<a href="#"><u>Molecular Principles and Cancer Research</u></a>	Spring
	<a href="#"><u>Molecular Principles and Neurobiology Research</u></a>	Autumn
	<a href="#"><u>Molecular Principles and Research in Inflammatory and Infectious Diseases and Immunology</u></a>	Autumn
	<a href="#"><u>Molecular Principles and Research in Metabolism and Endocrinology</u></a>	Autumn



	<a href="#"><u>Research and Development and Innovation Management</u></a>	Autumn
	<a href="#"><u>Arteriosclerosis, Dyslipidemia and Cardiovascular Disorders</u></a>	Autumn
	<a href="#"><u>Molecular and Cell Principles and Pathophysiology of Obesity</u></a>	Autumn
	<a href="#"><u>Molecular and Cell Principles and Physiopathology of Diabetes</u></a>	Autumn
	<a href="#"><u>New Therapies and Translational Research in Metabolic Diseases</u></a>	Autumn

Please, note that as an exchange student you will be able to apply for master courses from all master programs **except:** Bioinformatics and biostatistics, Bioinformatics for health sciences, International education in vaccine.

The MA courses chosen have to be authorized by the MA coordinator. So, once we receive your proposal, we will forward it to the MA coordinator for him/her to decide on your acceptance on the basis of your Transcript of Records. If you receive a negative response about a master course, the coordinator will recommend you another course if she/he thinks you can take it.

Incoming students are allowed to take courses from faculties other than Biology as long as the credits (ECTS) done in another faculty do not exceed the 50% of the total amount of credits that are done in the University of Barcelona. In other words, you have to take at least 51% of your credits at the Faculty of Biology.

If you want to take a course from another faculty, you need specific approval from that particular faculty. You have to fill in the specific document and send it to the International Relations Office of the other faculty. Once you have it signed you have to forward it to our mail. If you want to take courses from other faculties, please, tell us and we will provide you with the form created for this purpose.

Students are asked to choose courses from the Faculty of Biology (from different bachelors or masters). They can also take courses from faculties other than Biology as long as they do not exceed 49% of the total. In this case, students will need to request permission to the person in charge of international exchanges of the faculty that offers the course they are interested in.



## Lab trainings and research projects

We also offer to our incoming students the chance of undertaking “**Laboratory training**” recognized with 15 ECTS (half time) or 30 ECTS (full time). The time you should spend in a 30 ECTS Lab Training would correspond to a full-time job (7-8h per day) and to a part time job (4-5h per day) in the case of 15 ECTS Lab Training. In that case, incoming students should contact themselves with the Research Group and obtain an acceptance before coming to our Faculty.



## Steps for applying to an Internship at our Faculty

1- Check the research group you are interested in [here](#) or check other Catalan research institutions such as:

- [Institut de Recerca de Barcelona](#) (Biomedicine)
- CSIC (Spanish Research Council)
  - [Developmental Biology and Biomedicine](#)
  - [Molecular Biology and Biomedicine](#)
  - [Ecology](#)
  - [Marine Science](#)
- [IDIBAPS](#) (Biomedicine)
- [IGPT](#) (Biomedicine)
- [IDIBELL](#) (Biomedicine)
- [CRAG](#) (Agrobiology)
- [Josep Carreras Leukaemia Research Institute](#)

2- Contact the head of the group by e-mail showing that you are interested in becoming a part of the group + CV + Letter of motivation. If the head of the group agrees to have you as a trainee, then you will have to fill in an [Internship Confirmation](#) document (in case you come with the Erasmus Internship Programme) and send it to the head of the group to sign it. Finally, send it to [ori-bio@ub.edu](mailto:ori-bio@ub.edu). If you come to do a lab training with the Erasmus Student Programme, no Erasmus documents are required.

You can also check other institutions where to take your Lab Training such as:

- [Faculty of Medicine and Health Sciences](#)

3- Complete and send the [Online application](#)



**4- Once completed, send these documents**

- One printed copies of your online application form for admission duly completed and signed by your tutor at your home university;
- A certificate signed by your home University attesting your participation on the program
- Internship confirmation (if you come with the Erasmus Internship Programme)
- 2 passport-sized photographs;
- Certificate of language level

By email to [ori-bio@ub.edu](mailto:ori-bio@ub.edu).

Our address is International Relations Office of the Faculty of Biology (University of Barcelona), located in Av. Diagonal 643, 08028 Barcelona – Spain.

# Application

To be accepted as a temporary visiting student at the UB you need to follow the steps described below:

## 1. Find out if your home university has a student exchange agreement with the University of Barcelona

International students: Erasmus+, Erasmus Mundus, bilateral agreements, specific agreements with US universities, the Coimbra Group program, the CINDA program, etc.

## 2. If your home university has no formal exchange agreement with the UB, you may submit an individual application

## 3. Obtain authorization from your home university to participate in an exchange program at the UB

## 4. Complete and send the [Online application](#)

The application for the year 2024/2025 will open the **1<sup>st</sup> March**. The deadlines are:

- **30 of May** for the first semester and whole academic year.
- **30 of October** for the second semester

## 5. Once completed the application form, send de corresponding documents by email to [ori-bio@ub.edu](mailto:ori-bio@ub.edu)

### Erasmus + students

The following documents should be sent:

1. One printed copy of your online application form for admission duly completed and **signed by you and signed and stamped your home university**.
  2. 1 passport-sized photograph.
  3. Official Transcript of Records (**in English**) In case of MA students, the Transcript of Records of both BA and MA studies.
  4. Certificate of language proficiency (Catalan, Spanish or English, depending on the teaching language of the chosen subjects). The minimum level accepted is B2 according to the CEFR for any of the three languages.
- If you come to do a research project, please tell us the Department and your supervisor

### Erasmus+ Placement:

Firstly, it is necessary to obtain the acceptance from a department or service at the UB. Once you have the acceptance, send via email ([ori-bio@ub.edu](mailto:ori-bio@ub.edu)) the following documents:

- One printed copy of your online application form, signed by your tutor at your home university and stamped by your university.
- A certificate signed by your home University attesting your participation on the programme ([Learning agreement for Traineeships](#))
- Acceptance document from the department or service that will host you
- 1 passport-sized photographs;
- Certificate of language proficiency

### Students covered by Bilateral agreements:

- two printed copies of your online application form for admission, signed by your tutor at your home university
- a certificate signed by your home university attesting your participation on the program;
- 2 passport-sized photographs;
- Transcript of records;
- Certificate of language proficiency

For students coming with different Exchange Programmes, please check the documents you have to send [here](#). (*students covered by specific agreements with US universities should note that they do not have to send any documents*).

The Manager of mobility at the faculty of Biology will contact you formally to confirm whether or not you have been accepted.

You should send the documents **via email to [ori-bio@ub.edu](mailto:ori-bio@ub.edu)**:

After receiving the application, we will send the **Acceptance letter** to the students. You can contact us at [ori-bio@ub.edu](mailto:ori-bio@ub.edu) for any questions or doubts. We will have a **“Welcome session”** the week before each semester starts.



## Regular students

Students who have foreign qualifications may be admitted to Bachelor's degrees, Master courses, Postgraduate Diplomas and Doctoral Programmes at the UB.

Check all [the International Degrees and courses of the University of Barcelona](#)

Please consult below information on how to successfully complete the admission process to one of the bachelor's degrees: [Admission with foreign qualifications](#)

### Obtaining a student residence card

If you are a citizen of a European Union country or of the United Kingdom, Liechtenstein, Iceland, Norway and Switzerland, you are entitled to free movement and residence in Spain. However, if you wish to reside in Spain for a period of time exceeding three months must register at the Central Registry Office for Foreigners in order to be issued a Number Identification as a Foreigner (NIE).

If you are a citizen from outside the EU, you should apply for a student visa at the Spanish consulate in your home country or your country of legal residence. Applicants should submit the documents that show that they have been admitted to a programme, and apply for a student visa (type D).

Please find more information [here](#)



## Languages

UB recommends the temporary students to have a B1 as the minimum level necessary of Catalan, Spanish or English knowledge (depending on the teaching language of the chosen subjects). On average, approximately **65 % of classes are taught in Catalan, and the remaining 35 % in Spanish**. There are, as it is mentioned before, some courses exclusively in English.

We do not require exchange students to pass a language test. However, we expect exchange students who will follow courses to be able to follow the lectures. **Therefore, we *strongly recommend* all incoming students to prepare their knowledge of Spanish or Catalan thoroughly before coming to Barcelona.**

Throughout the academic year, the UB delivers [Catalan language courses](#) at all levels and with a wide range of course dates and weekly timetables to choose from, so that each student at the UB can reach a fair level in the language. The university also offers an intensive course, just before the beginning of the semester, designed especially for beginner students to reach a level of listening and writing skill to be able to handle their first university lectures and classes.

Those wishing to learn Spanish can choose from the courses offered by the [UB institution Hispanic Studies](#) and if you are interested in taking classes in other languages you can consult the range of courses offered by the [university's School of Modern Languages](#).



## Accommodation and living in Barcelona

In order to arrange accommodation for your stay in Barcelona, you can contact the [Barcelona University Centre \(BCU\)](http://www.bcu.cat), which provides the information you need to know to live and to study in Barcelona: how to get to Barcelona, cost of living, climate, moving about the city or services for the university community.

**Place:** Barcelona University Centre

**Address:** Torrent de l'Olla st., 219 - 08012 Barcelona

**Phone:** (34) 93 238 90 49 - **Fax:** (34) 93 228 92 59

**Website:** [www.bcu.cat](http://www.bcu.cat) - **E-mail:** [info@bcu.cat](mailto:info@bcu.cat)

**Opening hours:** Mon-Thu -> 09:00 - 14:00 and 15:00 - 17:00 // Fri-> 08:00 - 15:00





# Medical, accidents and repatriation insurance

All international students must take out medical, accident and repatriation, insurance for their stay at the UB.

## Medical coverage:

- **Students from countries that are members of the European Economic Area** (European Union countries, Iceland, Liechtenstein and Norway) and who are entitled to Social Security benefit in their own country should present their **European health insurance card**. The form for this card is issued by your country's public health authorities and entitles you to medical care in Spain.
- **Students from countries outside the European Economic Area** should establish whether there is a medical agreement between the social security system in their country and in Spain (this is the case for some Latin American countries). If there is one, you should request the relevant document from the health authorities in your country. This document will entitle you to medical care in Spain.

## Accidents and repatriation coverage:

- All students must prove an insurance that covers accidents and repatriation. It can be taken out at the home country at individual level or by the home institution

In any case, you have the option of purchasing one, with an insurance company has signed an agreement with the UB: [FERRER & OJEDA](#)

The Incoming students through the programme Erasmus + placement, must consider that the required Insurance will also have to include the Professional Liability coverage. Incoming Erasmus Internship students [are covered for civil liability by Berkley España](#)

## **Legal procedures**

If you wish to stay legally in Spain for six months or more and you are not a national of any European Union country (Austria, Belgium, Bulgaria, Croatia, Cyprus, Czech Republic, Denmark, Estonia, Finland, France, Germany, Greece, Hungary, Ireland, Italy, Latvia, Lithuania, Luxembourg, Malta, the Netherlands, Poland, Portugal, Romania, Slovakia, Slovenia and Sweden) or the United Kingdom, Liechtenstein, Iceland, Norway and Switzerland, you will need to obtain a student residence card (NIE) This document allows you to live in Spain during your period of study, and also allows you to travel throughout the European Union and in countries that have signed agreements with Spain or the European Union for the free movement of persons. If the period of your studies in Barcelona is of 6 months or less, the Spanish Embassy or Consulate might process a Student Visa with the comment "total studies 180 days".

**This type of Visa can be extended and you don't have to go back to your country to obtain a new Visa.** Please find more information [here](#)

In case you are **not a national of an EU country**, you will need to process your **Student Visa before your arrival at Barcelona.**

\*In case you are not a national of the EU country but you are coming through an EU university, you will have to process **your "Student Visa" before your arrival at Barcelona, even if your University says that it is not necessary.** We highly recommend you to process from your home country before your arrival as the procedure will be longer and time consuming if you do it from Spain.

[http://www.ub.edu/uri/estudiantsNOUB/nie\\_en.htm](http://www.ub.edu/uri/estudiantsNOUB/nie_en.htm)

**It is the responsibility of the student to arrive to our country in a legal way. So please, check entry requirements before coming.**

## Registering at the UB on your arrival

### Where do you have to go to register your arrival at the UB?

You have to come to the International Relations Office of the Faculty of Biology with the following documents:

- a document stating that you have been accepted to study temporarily at the UB (a letter or acceptance or the application form signed by the Head of International Exchanges Office at your faculty or school);
- [Medical, accidents and repatriation insurance](#) covering your stay at the UB. The accidents and repatriation insurance must be in English, Catalan or Spanish. The insurances written in any other language will not be accepted.
- 1 passport-sized photographs, to get a provisional credential which will give you access to a range of [specific services](#); and afterwards the UB student card
- ID Photocopy
- Home address (definitive)
- Name, code and group of the courses you will take
- Learning agreement
- Certificate of Arrival (which you will send back to your university)



## More things to know

### What do I need to open a bank account?

You need a letter of acceptance from your host university or research Centre, or any document that proves you're studying or doing research at a centre in Catalonia, as well as a passport number and a foreigner's ID number (NIE). If you're a national of an EU member state, apply for the NIE at the police station located at Rambla Guipúscoa, 74 (Barcelona). You'll need a prior appointment, which can be made [here](#). If you're not from an EU member country, go to the police station at Passeig de Sant Joan, 189 (Barcelona). To make an appointment, email at [infoext.barcelona@seap.minhap.es](mailto:infoext.barcelona@seap.minhap.es).

### How can I access the public health system?

If you come from an EU or EEA member state or Switzerland, you need either a valid European Health Card (issued by your home country) or private medical insurance for the duration of your stay. Non-EU citizens will require private medical insurance that covers their time here. Public primary medical care is provided at CAP centres. See [www.catsalut.cat](http://www.catsalut.cat) for details.

### Which card should I use to travel by public transport?

For more details, visit [www.tmb.es](http://www.tmb.es)



## **What to do in case of emergency?**

If you are the victim of a crime, ask for help from a police officer or call 112, which works for all emergency services, including ambulances and the fire brigade. It's free, works 24/7 and you can even call using your mobile in places where you can't get a signal with your provider (via another company). Operators can help in 50 languages.





## Contact information

International Relations Office - Faculty of Biology (Universitat de Barcelona)  
Diagonal 643  
08028 Barcelona  
Tel +34 93 4034827  
Mail: [ori-bio@ub.edu](mailto:ori-bio@ub.edu)  
Website: [www.ub.edu/ori-bio](http://www.ub.edu/ori-bio)

### Professors

Dra. Marta Camps (International Relations Coordinator) - [martacamps@ub.edu](mailto:martacamps@ub.edu)  
Dra. Cristina Madrid (Practicum coordinator for outgoing students):  
[practicum.erasmusbio@ub.edu](mailto:practicum.erasmusbio@ub.edu)

### Staff

Mercè Cabrera [ori-bio@ub.edu](mailto:ori-bio@ub.edu)



**Follow us on Social Media!**



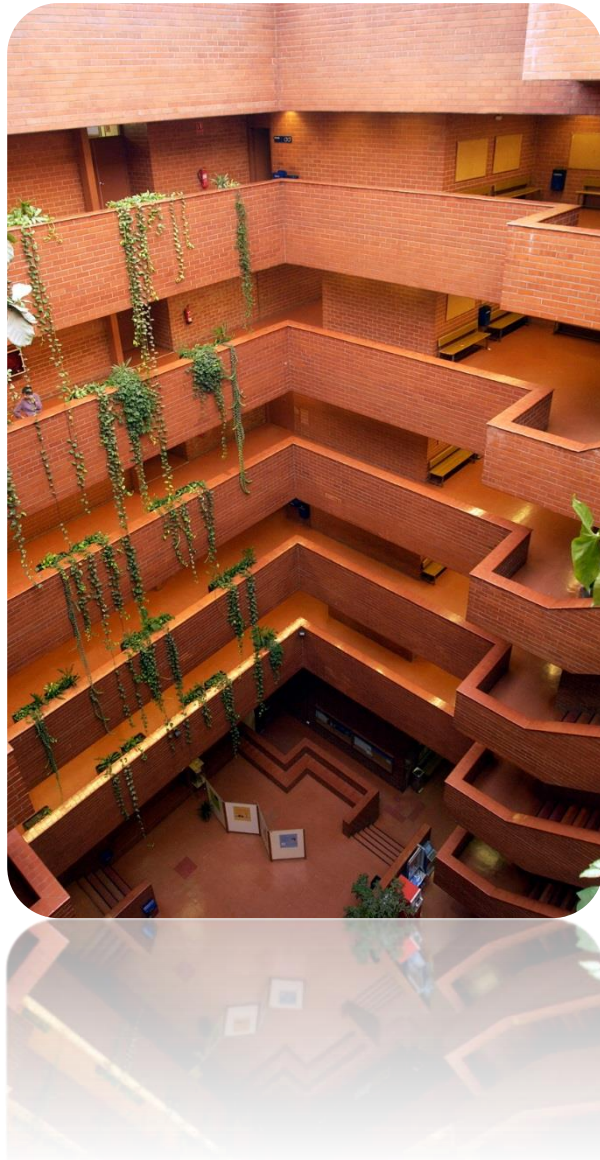
**@biology\_unibarcelona**



**@BiologiaUB**



**@UBBiologia**



The International Relations office also has its own [Twitter](#) and [Instagram](#) profiles.

*Cover picture: Incoming students Faculty of Biology 17-18*