



Interreg
POCTEFA



UNION EUROPEA
UNION EUROPEENNE



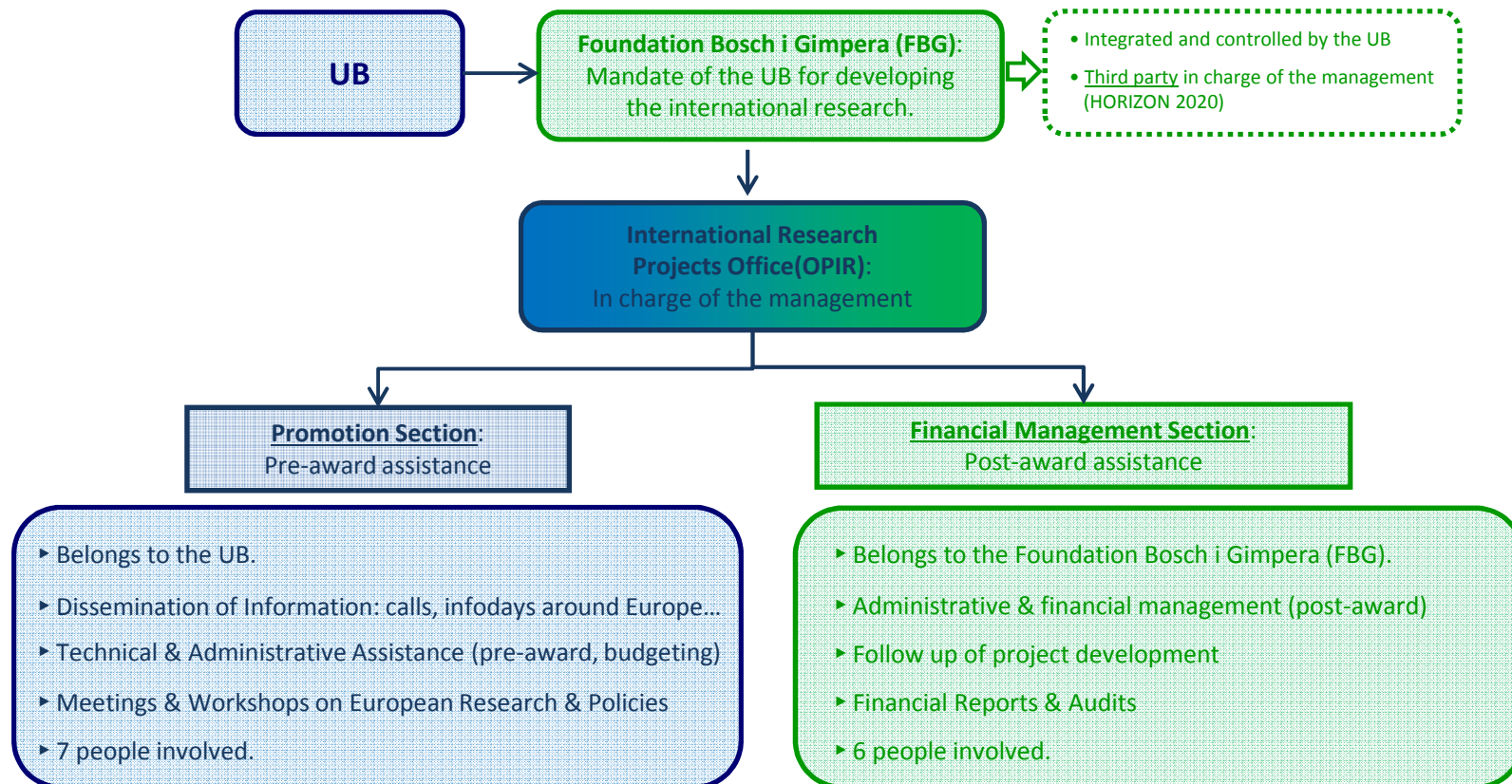
Interreg
Sudoe
European Regional Development Fund

Oportunitats de finançament europeu per post-docs

IRBIO – 1 de Juliol de 2019

Oficina de Projectes Internacionals de Recerca (OPIR)
Universitat de Barcelona – Fundació Bosch i Gimpera
Mireia Martí – Josep Querol

EUROPEAN RESEARCH PROJECTS AT THE UB: General frame



HORIZON 2020

HORIZON 2020 is the EC financial instrument for the period 2014-2020. It links **research** and **innovation** by integrating all the research phases (from the generation of knowledge to close-to-market activities).

PILLAR 1

EXCELLENT SCIENCE

Reinforce and extend scientific excellence and consolidate the European Research Area to increase competitiveness worldwide.

- European Research Council (ERC)
- Future and Emerging Technologies (FET)
- Marie Skłodowska-Curie actions (MSCA)
- Research Infrastructures (RI)

PILLAR 2

INDUSTRIAL LEADERSHIP

Develop technologies and innovations that support companies and SMEs to become leading companies in the world.

- Leadership in Enabling and Industrial Technologies (LEIT)
 - KETs (Nanotech., Adv. materials, Adv. manufact. and processing, Biotech.)
 - ICT
 - Space
- Access to risk finance
- Innovation in SMEs

PILLAR 3

SOCIETAL CHALLENGES

Address and investigate the main concerns shared by citizens of Europe and other places (priorities of the Europe 2020 Strategy policy).

- SC1: Health, Demographic Change and Wellbeing
- SC2: Food Security, Sustainable Agriculture and Forestry, Marine, Maritime and Inland Water Research and the Bioeconomy
- SC3: Secure, Clean and Efficient Energy
- SC4: Smart, Green and Integrated Transport
- SC5: Climate Action, Environment, Resource Efficiency and Raw Materials
- SC6: Europe in a changing world - Inclusive, innovative and reflective societies
- SC7: Secure societies – Protecting freedom and security of Europe and its citizens

Science with and for Society (SWAFS): cooperation between science and society, with conscience and social responsibility.

Spreading Excellence and Widening Participation (SEWP): optimize the strengths of MS to rationalize and standardize.

PROJECTS

TIPOLOGIES

According to the topics:

- **OPEN (*bottom-up*)**: basically Pillar 1. Any research line is financed.
- **CLOSED (*top-down*)**: in general, Pillars 2 and 3. Research is financed in pre-established lines.

According to the participants:

- **INDIVIDUAL**: basically ERC and MSCA Individuals.
- **COLLABORATIVE**: the rest. Participation may be as *Coordinator* or *Partner*.

ACTIONS (COLLABORATIVE PROJECTS)

- **Research and Innovations Actions (RIA)**: Projects that address clearly defined challenges, which can lead to the development of new knowledge or new technology.
- **Innovation Actions (IA)**: Projects with close-to-market activities, such as the creation of prototypes, essays, demonstration, etc., if they aim to produce new or improved products or services.
- **Coordination and Support Actions (CSA)**: Coordination of networks of projects, programs and policies of research and innovation (may include complementary activities of strategic planning, networking and coordination between programs in different countries).

SOME FEATURES OF COLLABORATIVE PROJECTS

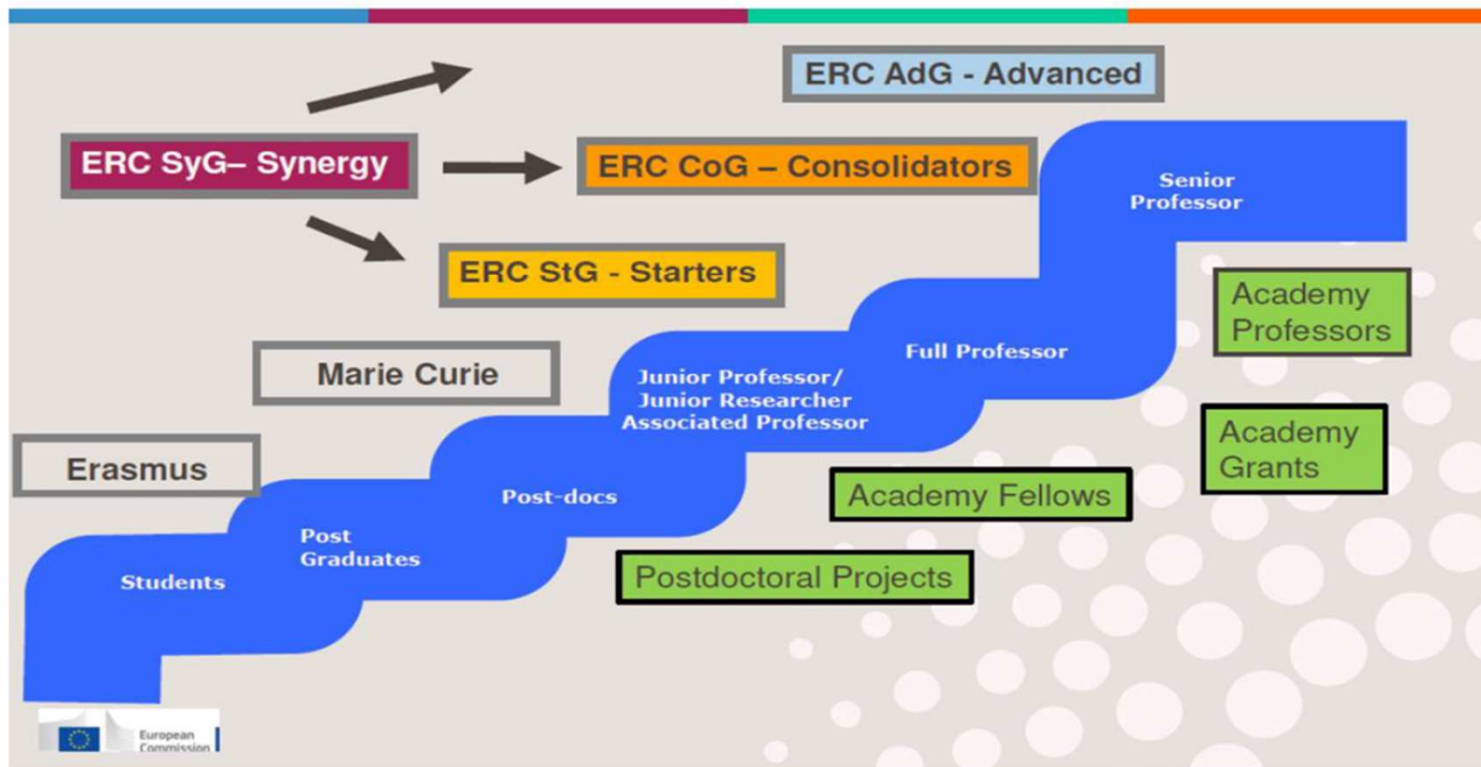
- They imply new features and/or advances in knowledge, technologies, processes, etc., and depending on the call, they can cover from basic research to innovation.
- Projects must have a European and/or international dimension and use to be transnational.
- Collaborative projects require the participation of a minimum of 3 entities from 3 different Member States (open to the participation of third countries).
- Projects are multi-sectoral and multidisciplinary.
- Impact is a key aspect, especially with regard to economic and social aspects.
- They are compatible with any other grants, as long as the regulations allow it.

RESEARCH CAREER

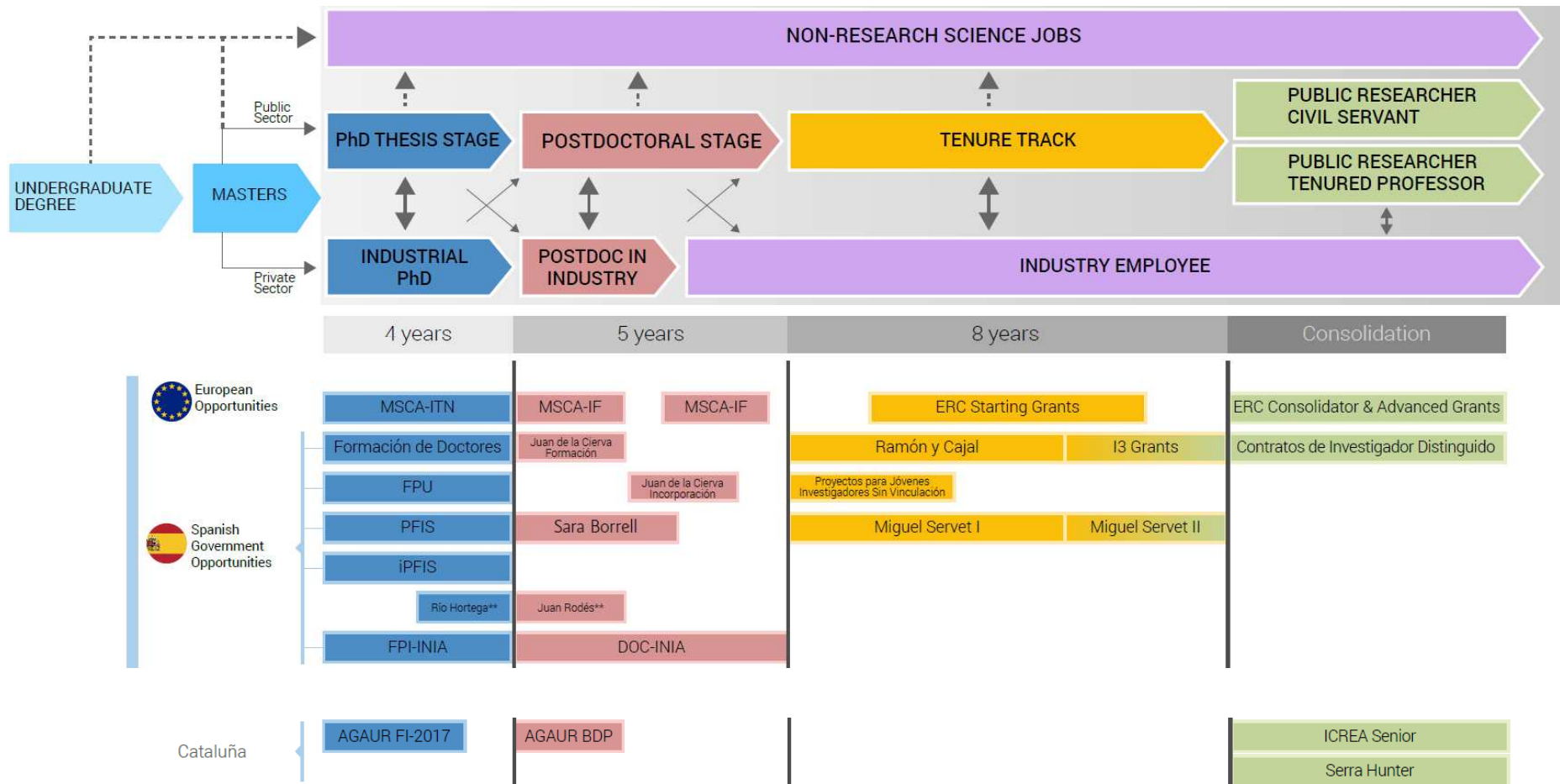
Researchers career development and complementary funding schemes



European Research Council
Established by the European Commission



RESEARCH CAREER



Other Resources

- EURAXESS: <https://euraxess.ec.europa.eu/jobs>
- VITAE UK: <https://www.vitae.ac.uk/>
- Portal de finançament de la recerca de la UB: <http://www.ub.edu/opir/>
- Oficina Europea: <https://eshorizonte2020.es/>
- Xarxa de NCP MSCA: <https://www.net4mobility.eu/>
- Xarxa NCP SC2: <https://www.ncp-biohorizon.net/>
- PIPERS project Career Kit: <https://euraxess.ec.europa.eu/career-development/researchers/pipers-project-career-kit>
- Marie Curie Alumni: <https://www.mariecuriealumni.eu/>



PILLAR 1. EXCELLENT SCIENCE

Excellent science is the basis of future technologies, employment and well-being. Europe needs to attract and retain research talent, as well as to provide researchers with access to quality infrastructures.

EUROPEAN RESEARCH COUNCIL (ERC)

- ▶ **ERC Starting Grants**: promising early-career researchers with 2 to 7 years experience after their PhD (up to 1,5 million € for 5 years).
- ▶ **ERC Consolidator Grants**: excellent researchers with 7 to 12 years experience after their PhD (up to 2 million € for 5 years).
- ▶ **ERC Advanced Grants**: consolidated researchers, leaders in their fields, with important research achievements in the last 10 years (up to 2,5 million € for 5 years).



MARIE SKŁODOWSKA-CURIE ACTIONS

- ▶ **Innovative Training Networks (ITN)**: train creative and innovative researchers through an international network of public and private centres.
- ▶ **Individual Fellowships (IF)**: promote mobility to improve the creative and innovative potential of experienced researchers through individual projects.
 - **European Fellowships (IF European)**: mobility at European level with 1 to 2 years projects.
 - **Global Fellowships (IF Global)**: mobility outside Europe with compulsory return phase with 2 to 3 years projects.
- ▶ **Research and Innovation Staff Exchange (RISE)**: strengthen international collaboration in R+D+i through exchanges of research and innovative personnel between public and private entities.



EUROPEAN RESEARCH COUNCIL (ERC)





ERC GRANTS

STG

Starting Grants
(2-7 years after PhD)

up to €1.5 Million
for 5 years
+ €500,000

COG

Consolidator Grants
(7-12 years after PhD)

up to €2 Million
for 5 years
+ €750,000

ADG

Advanced Grants
10 years' track-record

up to €2.5 Million
for 5 years
+ €1 Million

Proof-of-Concept - PoC

bridging gap between research –
earliest stage of marketable innovation
€150,000 for ERC grant holders

Synergy Grant - SYG

2-4 Principal Investigators
up to €10 Million for 6 years
+ €4 Million



Interreg
POCTEFA



Interreg
Sudoe
European Regional Development Fund





MARIE SKŁODOWSKA-CURIE ACTIONS



Marie Skłodowska-Curie
Actions



TYPES OF RESEARCHERS

EARLY-STAGE RESEARCHERS (ESR)

The Early-Stage Researcher (ESR) is, at the date of *recruitment*, in the first four years of his/her research career (or full-time equivalent research experience) and has not been awarded with a PhD yet.

EXPERIENCED RESEARCHERS (ER)

The Experienced Researcher (ER) is, at the date of the call *deadline*, in possession of a PhD (or has at least four years of full-time equivalent research experience).

ITN and RISE.

Individual Fellowships



MOBILITY

Researchers may not have resided or carried out their main activity (work, studies, etc.) in the country of their host organization for more than 12 months in the three years immediately before the reference date (it depends on the call).

TYOLOGIES OF PROJECTS

INDIVIDUALS

► **Individual Fellowships (IF):** opportunities to ER of any nationality to acquire and transfer new knowledge and to work on research and innovation in Europe (EU Member States and Associated Countries).

- **European Fellowships (IF European):** researchers either coming to Europe or moving within Europe (up to 24-36 months).

- **Standard European Fellowships.**
- **Career Restart Panel.**
- **Reintegration Panel.**

- **Global Fellowships (IF Global):** based on a secondment (12 to 24 months) to a Third Country and a mandatory 12 month return period to an European host (up to 36 months).

XARXES

► **Innovative Training Networks (ITN):** support competitively selected joint research training and/or doctoral programmes, implemented by partnerships of universities, research institutions, research infrastructures, businesses, SMEs, and other socio-economic actors from different countries across Europe and beyond.

► **Research and Innovation Staff Exchange (RISE):** partnerships in the form of a joint research and innovation project developed through **international** as well as **intersectorial mobility**.

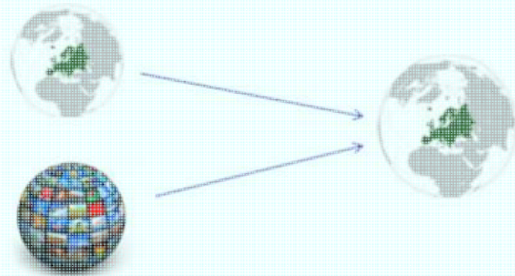


INDIVIDUAL FELLOWSHIPS

“The goal of Individual Fellowships is to enhance the creative and innovative potential of experienced researchers wishing to diversify their individual competence in terms of skill acquisition at multi- or **interdisciplinary** level through advanced training, **international** and **intersectorial** mobility”.

Enhance the creative and innovative potential of Experienced Researchers .

Diversify their individual competence in terms of skill acquisition at multi- or interdisciplinary level through advanced training, international and intersectorial mobility.



European Fellowships



Global Fellowships

CAREER RESTART PANEL

MULTIDISCIPLINARY PANEL

Financial support to individual researchers who want to resume research in Europe after a career break (parental leave, working outside research, long-term sick leave, ...)

Bottom-up approach

ELEGIBILITY CRITERIA

- ▶ Experienced Researcher.
- ▶ Any nationality.
- ▶ Comply with the mobility rule (3/5)
- ▶ Beneficiary must be a participant located in an EU Member State or Associated Country.
- ▶ The researcher must have undertaken a career break (not have been active in research for at least 12 months of the 18 months prior the deadline 12/03/18-11/09/19).





REINTEGRATION PANEL

MULTIDISCIPLINARY PANEL

*Financial support to
researchers who want to return
and reintegrate in a
longer term position in Europe.*

**Bottom-up
approach**

ELEGIBILITY CONDITIONS

- ▶ Experienced Researcher.
- ▶ **Nationals or long-term** (5 consecutive years and periods of absence between 6 and 10 months) residents of EU Member State or Associated Country.
- ▶ Comply with the mobility rule (3/5, directly TC to MS/AC)
- ▶ Beneficiary must be a participant located in an EU Member State or Associated Country.



GLOBAL FELLOWSHIPS

Composed of an outgoing phase (12-24 months) and a mandatory 12 months return period to a Host Organization

8 SCIENTIFIC AREAS

- ▶ Chemistry (CHE)
- ▶ Social Sciences and Humanities (SOC)
- ▶ Economic Sciences (ECO)
- ▶ Information Science and Engineering (ENG)
- ▶ Environment and Geosciences (ENV)
- ▶ Life Sciences (LIF)
- ▶ Mathematics (MAT)
- ▶ Physics (PHY)

**Bottom-up
approach**

ELEGIBILITY CRITERIA

- ▶ Experienced Researcher.
- ▶ Nationals or long-term residents of EU Member State or Associated Country.
- ▶ Comply with the mobility rule (12/36)
- ▶ Return period Beneficiary must be a participant located in an EU Member State or Associated Country.



NETWORKS

INNOVATIVE TRAINING NETWORKS (ITN)

The Innovative Training Networks (ITN) aim **to train a new generation of creative, entrepreneurial and innovative early-stage researchers**, able to face current and future challenges and to convert knowledge and ideas into products and services for economic and social benefit.

RESEARCH AND INNOVATION STAFF EXCHANGE (RISE)

The RISE scheme promotes international and **cross-sector collaboration through exchanging research and innovation staff**, and sharing knowledge and ideas from research to market (and vice-versa). The scheme fosters a shared culture of research and innovation that welcomes and rewards creativity and entrepreneurship and helps to turn creative ideas into innovative products, services or processes.





COSTS AND REMUNERATIONS

Marie Skłodowska-Curie Action	Research Unit Cost (person/month)			Institutional Unit Cost (person/month)	
	Living allowance	Mobility allowance	Family allowance	Research, training and networking costs	Management and Indirect costs
Individual Fellowships	4.880	600	500	800	650
Innovative Training Networks	3.270	600	500	1.800	1.200



Overview
of the
actions

INDIVIDUAL FELLOWSHIPS		EUROPEAN (EF)				GLOBAL
		ST	CAR	RI	SE	GF
EXPERIENCED RESEARCHERS	Nationality	ANY	ANY	MS, AC or long-term residents	ANY	MS, AC or long-term residents
	Mobility	From ANY country to MS or AC	From ANY country to MS or AC	From TC directly to MS or AC (location of the host institution)	From ANY country to MS or AC	From ANY country to TC then to MS/AC
		≤ 12 months in the last 3 years	≤ 36 months in the last 5 years	≤ 36 months in the last 5 years	≤ 36 months in the last 5 years	≤ 12 months in the last 3 years
	Career break in research	-	at least 12 months within 18 months prior to call deadline	-	-	-
PARTICIPANTS	Beneficiary	MS or AC	MS or AC	MS or AC	MS or AC Non-academic only	MS or AC
	Entity with a capital or legal link	MS or AC	MS or AC	MS or AC	MS or AC Non-academic only	MS or AC
	Partner Organisation	MS or AC	MS or AC	MS or AC	MS or AC (both academic and non-academic)	Outgoing phase (mandatory): TC Secondment (optional): MS or AC
DURATION (months)		12 to 24	12 to 36	12 to 24	12 to 24	12 to 24 + 12
SCIENTIFIC AREAS		8	8	8	8	8
NUMBER OF RANKING LISTS		8	1	1	1	8
BUDGET (total EUR 294.49 million)		EUR 236.49 million			EUR 8 million	EUR 50 million



PROPOSAL

Funding & Tender opportunities: <https://ec.europa.eu/info/funding-tenders/opportunities/portal/screen/home>

PART A

- ▶ **SECTION 1:** General information about the proposal.
- ▶ **SECTION 2:** Data on participating organisations.
- ▶ **SECTION 3:** Budget
- ▶ **SECTION 4:** Ethics table.
- ▶ **SECTION 5:** Information on partner organisations.

Expected activities in the IF

Mobility

Public engagement

Training

Communication & Dissemination

PART B (1/2)

- 1. Excellence (50%)
 - 2. Impact (30%)
 - 3. Implementation (20%)
- 10 PAGES LIMIT!!!**
-
- 4. CV of the Experienced Researcher.
 - 5. Capacities of the participating organisations.
 - 6. Ethics aspects.
 - 7. Letters of commitment of partner organisations (for GF only)



Some general tips

- ▶ **Evaluation criteria:** Address each specific evaluation criteria
- ▶ **Perfection:** Strengths may will not outweigh weaknesses
- ▶ **Acronym:** Use a *catchy* acronym
- ▶ **Proposal Template:** follow it! Some evaluators use a “checklist” approach- if the information is not in the correct section, they will give you a “zero”
- ▶ **Proposal Layout:** use charts, text boxes, figures to explain aspects of the project; use tables as often as possible; use correct font size, line spaces and margins as indicated in the Guide for Applicants; use highlighting where appropriate but don't over do it
- ▶ **Proposal Language:** explain any abbreviations, use simple clear text, avoid long sentences, avoid repetition, do not copy paste, be consistent (1st 3rd person)

... And remember

READ THE GUIDE FOR APPLICANTS and any other call documents!

**LINK THE IDEA TO THE OPPORTUNITY, UNDERSTAND THE FUNDING AGENCY'S
AGENDA**



EVALUATION CRITERIA

EXCELLENCE

50%



IMPACT

30%

IMPLEMENTATION

20%





SOME GENERAL ADVICES

- ***A merry host makes merry guests:*** demonstrate the good quality of the host. Remember: be sure that supervisor understands his/her role and agrees to host/support you.
- ***Take your time:*** read carefully all guidelines and evaluation criteria when writing the proposal.
- ***Successful proposals are SMART:*** Specific, Measurable, Achievable, Relevant and Timely.
- ***Link the project to a bigger picture:*** your career. MSCA IF targets researchers with a proven track record of high achievement relative to their career stage.
- ***Strengths may not outweigh weaknesses:*** all sections are important! Follow the evaluation criteria.
- ***Patience, perseverance and positivity!***



LINKS OF INTEREST

EC Participant Portal:

<http://ec.europa.eu/research/participants/portal/desktop/en/home.html>

Marie Skłodowska-Curie Actions:

<http://ec.europa.eu/research/mariecurieactions>

EURAXESS Jobs:

<http://ec.europa.eu/euraxess/index.cfm/jobs/index>

OPIR UB:

<http://www.ub.edu/oper>



Contact mail:

recerca.europea@ub.edu
Mireia Martí / Josep Querol